



Hospital General de Granollers
Hospital Universitari
Fundació Privada Hospital Asil de Granollers



ULTRASOUND IN THE CRITICALLY ILL



**3rd CEURF
Ultrasound Course
Barcelona 2022**

**November
21-25**

The CEURF course is based on the use of WBU - Whole Body Ultrasonography - and the concept of Visual Medicine for the diagnosis and therapeutic approach of critical patients in any scenario.

CEURF favors homogeneous training warranted by the didactic potential coming from one same lecturer, medical intensivist, 28 years of research at the bedside of critically ill patients seen between ER and ICU, visiting professor, author of 6 textbooks, some dozens of publications, regularly invited in international congresses. He uses his didactic abilities for making critical ultrasound a holistic tool, centered by the lung.

OBJECTIVE

CEURF aims at promoting the use of ultrasound as a clinical tool devoted to the critically ill, seen in the ICU, the Emergency Room, the Operation Room or everywhere, used as a genuine stethoscope. CEURF favors simple machines and simple rules, allowing the practice of a visual medicine.

METHODOLOGY

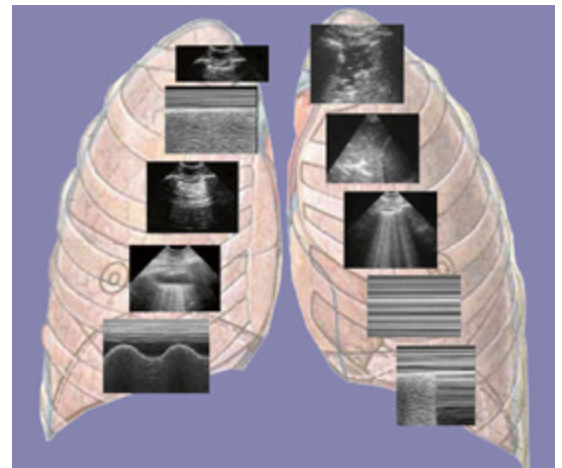
An approach focused on the critically ill. Attendees will benefit from a training focusing exclusively on points yielding therapeutic management of critical situations.

Adapted training. CEURF uses applications usually not described in traditional textbooks. It shows an alternative approach for life-saving questions, offering a direct parameter of volemia (FALLS-protocol) and a direct approach to respiratory failure (BLUE-protocol).

The lung. Lung ultrasound is the masterpiece of CEURF.

A multidisciplinary spirit. Participants are recruited among all specialties dealing with the lung.

A spirit of simplicity. Simplicity is the key word of CEURF, used to its extreme without compromise to the patient' safety. A simple but adapted unit, a universal probe suitable for all applications, a simple material for interventional ultrasound, a clean substitute for gel, simple applications, dichotomic approaches, mainly at the lung area, are used.





16 participants

PARTICIPANTS

This course is aimed at medical intensivists, anesthesiologists, emergency physicians, pediatricians, pre-hospital physicians, cardiologists, nephrologists, radiologists...



PROGRAMME

- Ultrasound devoted to the critically ill - Introduction
- Simple emergency cardiac sonography
- The lung, the basis
- Lung ultrasound, the basis
- The BLUE-Protocol
- The Pink-Protocol
- The LUCI-FLR Program
- The FALLS-Protocol
- Venous Access
- Abdomen
- The SESAME-Protocol

One year Access to the CEURF Ultrasound Course
<https://www.ceurf.com/>

LANGUAGE

English

MODE

Presential



DURATION

6 lecture hours +
 6 hours hands-on training

LECTURE DAY FOR ALL STUDENTS

Monday, November 21st

TIMETABLE

9 AM to 3 PM all days

HANDS-ON TRAINING

- Group 1:** Tuesday, November 22nd
- Group 2:** Wednesday, November 23rd
- Group 3:** Thursday, November 24th
- Group 4:** Friday, November 25th

The assigned group will be communicated before the start of the training.



FACULTY

Dr. Daniel Lichtenstein

President of CEURF (Cercle des Echographistes D'Urgence et de Reanimation Francophones).
 Medical Intensive Care Unit. Hospital Ambroise-Paré. Boulogne (Paris-Ouest University). Paris - France.

Dr. Germán Moreno

Coordinator of CEURF Course. Medical Anesthesiology Specialist.
 Hospital General de Granollers. Barcelona.

- 1 Contact product, the probe, disinfectant
- 2 A smart ultrasound unit with a Flat keyboard
- 3 Material for emergency ultrasound-enhanced procedures (pneumothorax, tamponade, venous line...)
- 4 Notebook (etc)
- 5 Emergency management (airway, fluids...)
- 6 Four wheels (the most important, allowing easy transportation of the PUMA from bed to bed, from ICU to ER)



FEE 465€

DIRECTION

Dr. Germán Moreno Aguilar. Anesthesiologist at Granollers General Hospital

Dra. Carmen Sanabria Pico. Anesthesiologist at Granollers General Hospital

Dra. Gracia Cárdenas Lopez. Chief of Anesthesiology and Resuscitation Service at Granollers General Hospital

Dr. Pau Garro Martinez. Chief of Intensive Care Unit at Granollers General Hospital

Any queries please contact: formacio@fphag.org

LOCATION

Edifici del Coneixement / Intensive Care Unit
Hospital General de Granollers
Avda. Francesc Ribas, s/n 08402 Granollers

APPLY NOW at https://www.fphag.org/ultrasound_in_the_critically_ill_3rd_ceurf/

ACCREDITATION

The course is in process of accreditation by Consell Català de les Professions Sanitàries. Participants will receive a certificate of attendance.

With the endorsement of SCARTD

(Societat Catalana d'Anestesiologia, Reanimació i Terapèutica del Dolor)



Hospital General de Granollers

Hospital Universitari

Fundació Privada Hospital Asil de Granollers

